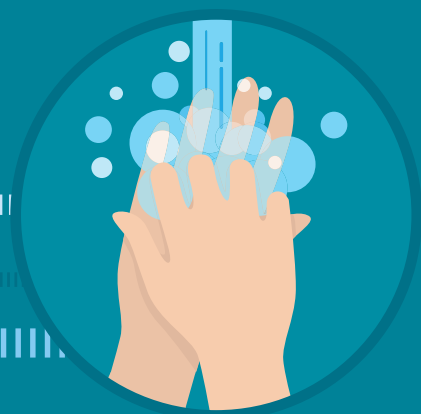
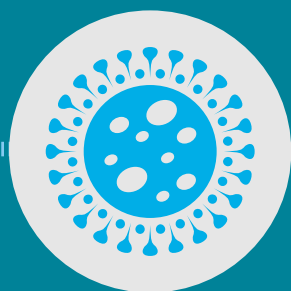
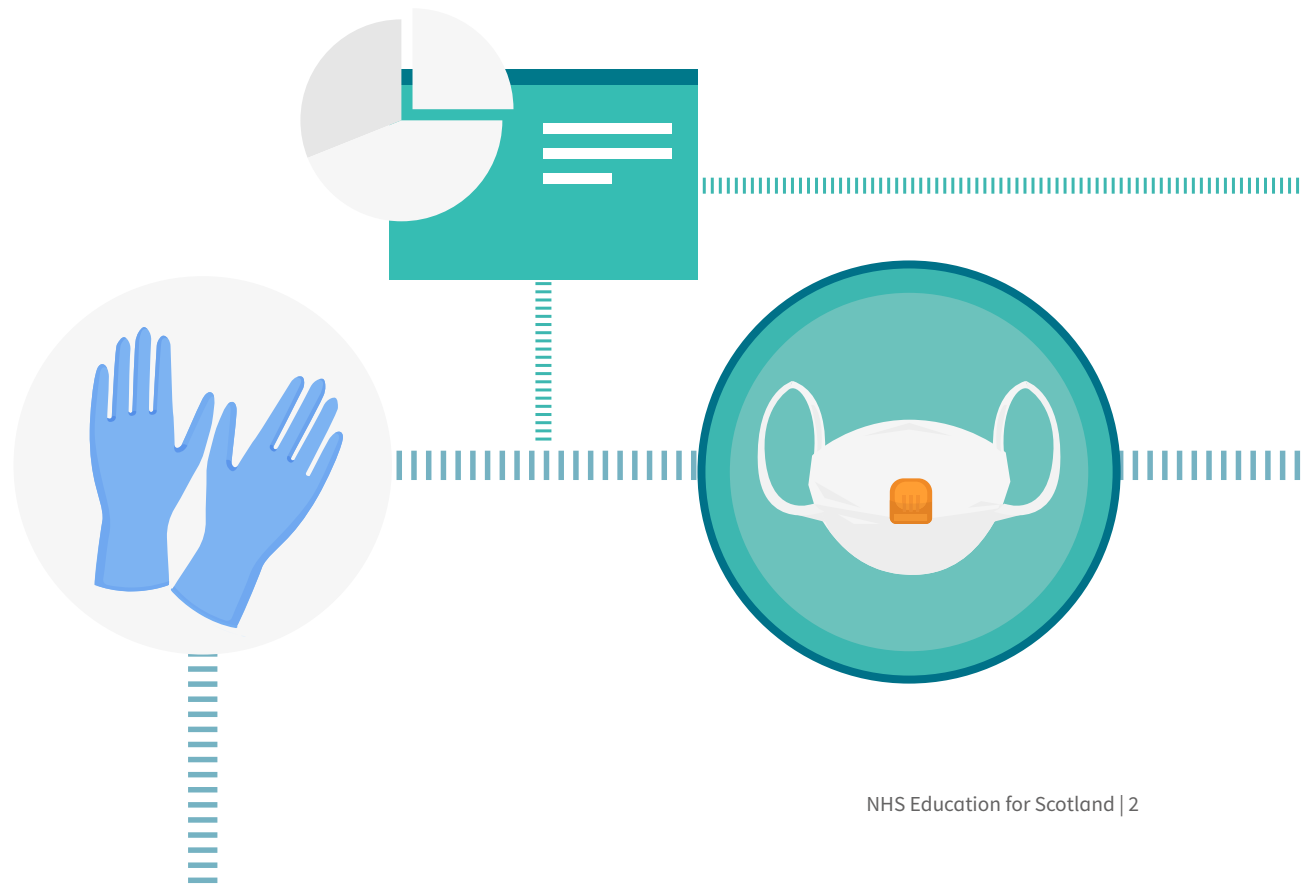


Understanding the UK Coronavirus COVID-19: Infection Prevention and Control Measures

A guide for support workers in all health and care settings



Contents



01 | Introduction

As a support worker currently working in a health or care setting you will be required to provide care for a variety of people in a wide range of health and care environments. This could include people who are confirmed or suspected COVID-19 cases.

It is essential that you have the most up-to-date Infection prevention and control guidance to ensure your practice protects the people you care for, yourself and your colleagues.



Infection and prevention control measures have never been so important!

The information in this guide will support you to make an informed choice of which resource is most relevant for you.



02 | Infection prevention and control guidance

NHS Education for Scotland (NES) and Health Protection Scotland (HPS) have developed two PowerPoint presentations which will provide you with the key infection prevention and control information you will need to protect yourself and others.

The COVID-19 response is evolving rapidly, and guidance will change as more information becomes available. Make sure you check the [Health Protection Scotland website](#) regularly for the most up to date guidance on COVID-19.

These presentations are based on the [National Infection Prevention and Control Manual](#).

The two PowerPoint presentations are:

1 UK COVID-19 response infection prevention and control measures (Full Version)

This PowerPoint presentation contains information on Standard Infection Control Precautions (SICPs) and Transmission Based Precautions (TBPs) as well as COVID-19 specific Infection Prevention and Control (IPC) guidance.



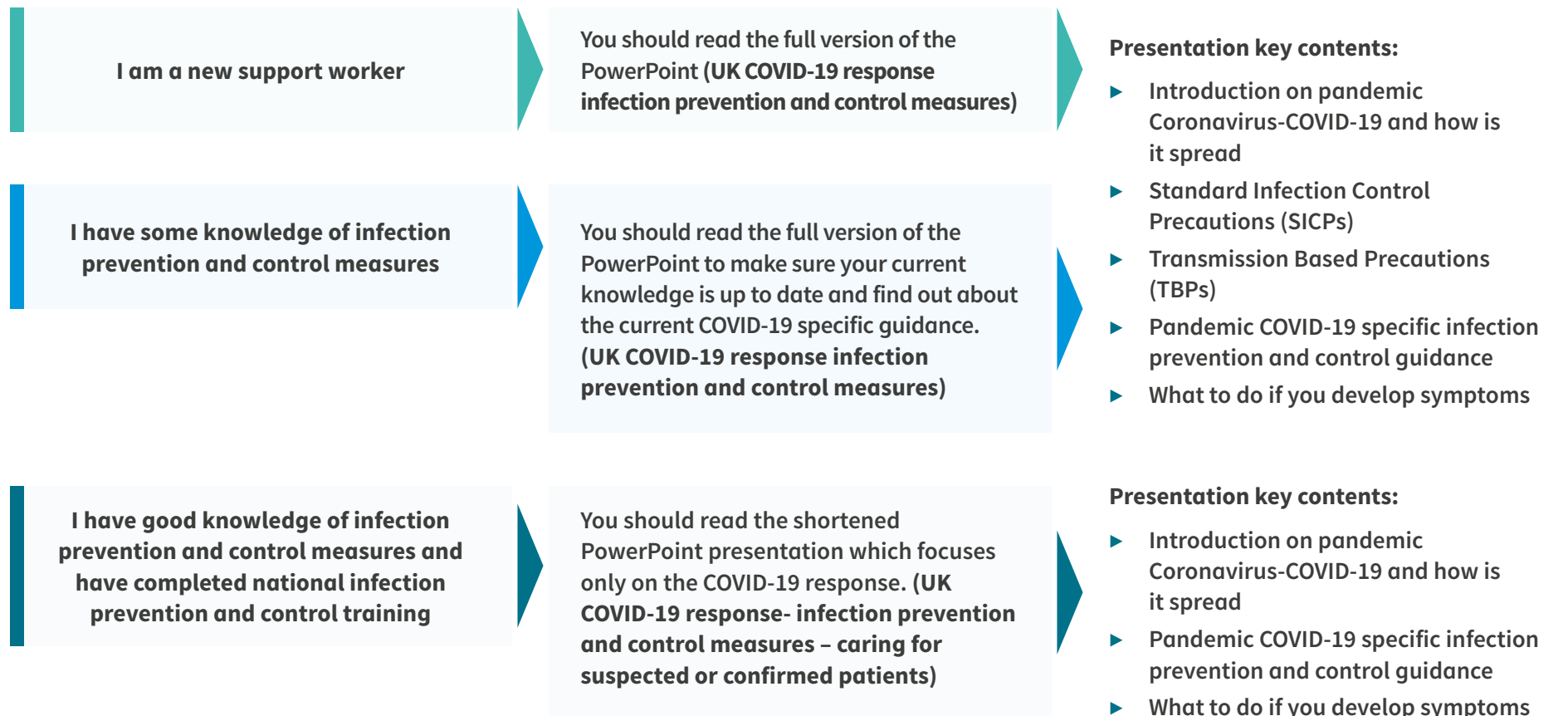
2 UK COVID-19 response- infection prevention and control measures – caring for suspected or confirmed patients

This PowerPoint presentation contains only the pandemic COVID-19 specific IPC guidance.

03 | Which PowerPoint presentation is right for me?

Use the flow chart below to identify which presentation is most relevant for you in your current role.

The flow chart also provides information on the content of each presentation.



03 | Which PowerPoint presentation is right for me?

If you have good knowledge of infection prevention and control measures you will select the shorted presentation (UK COVID-19 - IPC measures caring for suspected or confirmed patients).

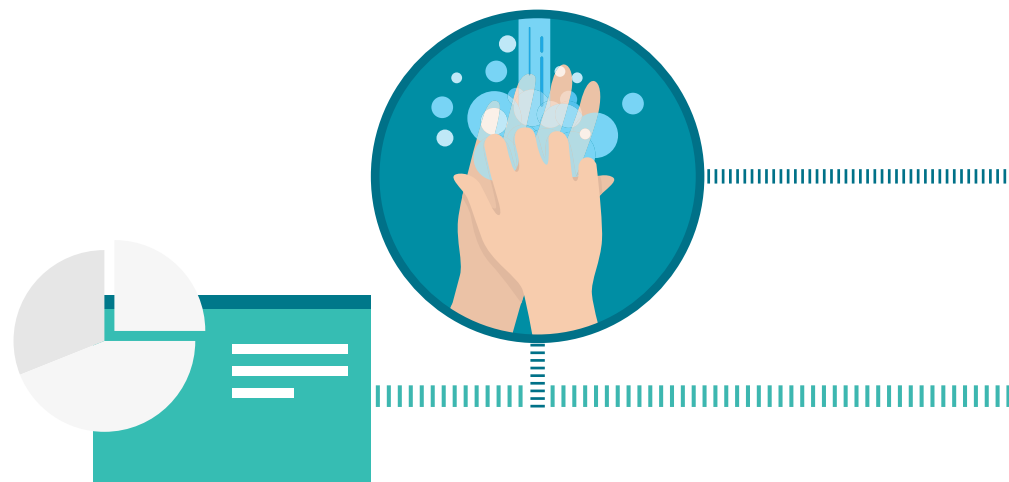
In doing so you **must** ensure that you are already fully aware and able to put into practice, the current Standard Infection Control Precautions (SICPs) and Transmission Based Precautions (TBPs) detailed in the **National Infection Prevention and Control Manual**.



Remember: The COVID-19 response is evolving rapidly, and guidance will change as more information becomes available. Make sure you check the **Health Protection Scotland website** regularly for the most up to date guidance on COVID-19.

What to do next

- ▶ Once you have decided which PowerPoint presentation is most relevant to your current knowledge and experience you can start to work through the presentation
- ▶ It may take some time for you to work through and may include words/terms you are not familiar with, always ask if you are unsure. The presentations include links to further information which you may find useful
- ▶ Your manager will also be able to help you with information about staying safe in the area you are working in
- ▶ Think about how the information you are reading relates to your own area of practice



Understanding the UK Coronavirus COVID-19: Infection Prevention and Control Measures

This resource may be made available, in full or summary form, in alternative formats and community languages.
Please contact us on 0131 656 3200 or email altformats@nes.scot.nhs.uk



NHS Education for Scotland

Westport 102

West Port

Edinburgh

EH3 9DN

www.nes.scot.nhs.uk

© NHS Education for Scotland 2020. You can copy or reproduce the information in this document for use within NHSScotland and for non-commercial educational purposes. Use of this document for commercial purposes is permitted only with the written permission of NES.

NESD1244 Recognising and Reporting People Who Are Deteriorating: Information for support workers in all health and care settings | Designed by the NES Design Team